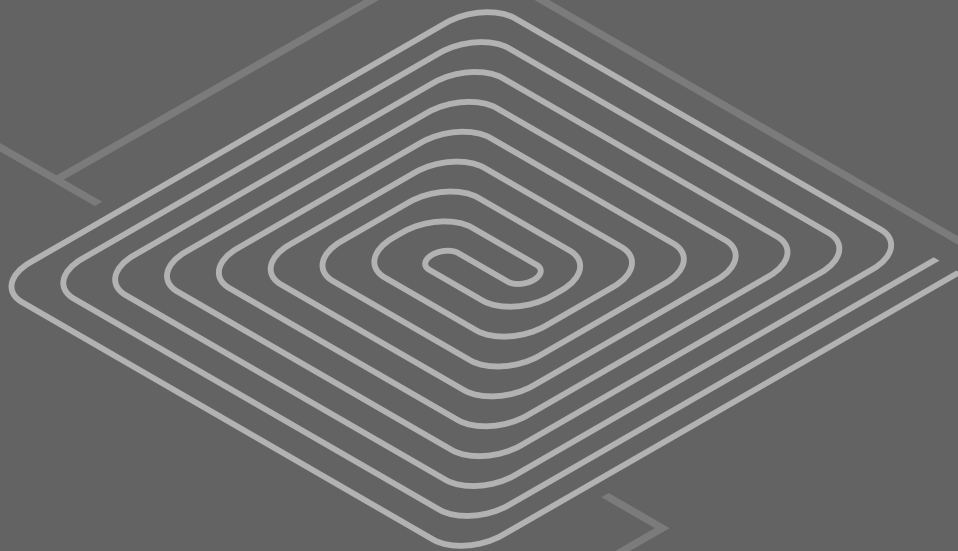




**VENTILATION DEVICES  
FOR RADIANT SYSTEMS**

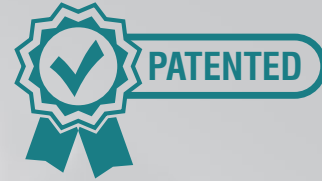


# RO

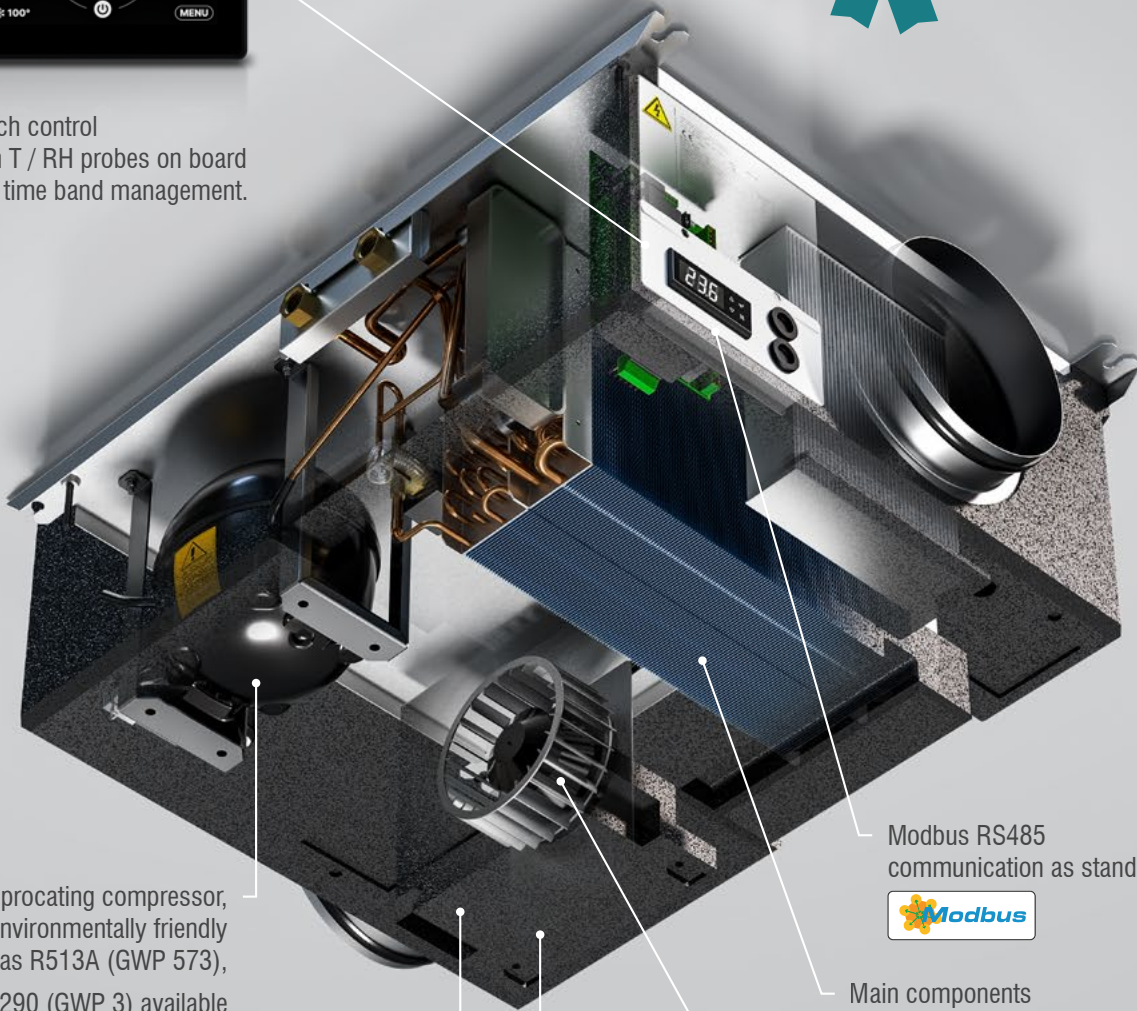
## Horizontal polypropylene dehumidifier



Wi-Fi    matter



Touch control with T / RH probes on board and time band management.



Reciprocating compressor, environmentally friendly gas R513A (GWP 573), R290 (GWP 3) available from 2026.

Polypropylene casing to ensure an high level of lightness, thermal and acoustic insulation without compromising strenght.

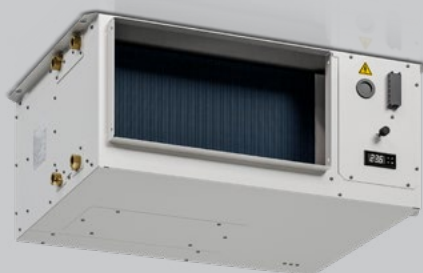
Modbus RS485 communication as standard.



Main components and condensate drain tray accessible from the bottom, serviceable and cleanable.

3-speed or modulating EC electronic radial fans to reduce power consumptions and noise.

# RS



3 versions available:

- A** : heating, isothermal dehumidification.
- I** : heating, cooling, isothermal dehumidification.
- W** : heating, cooling.

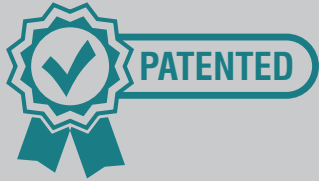
Available in metal chassis (airflow rate 600/1000 m<sup>3</sup>/h).

# Wall-mounted polypropylene dehumidifier

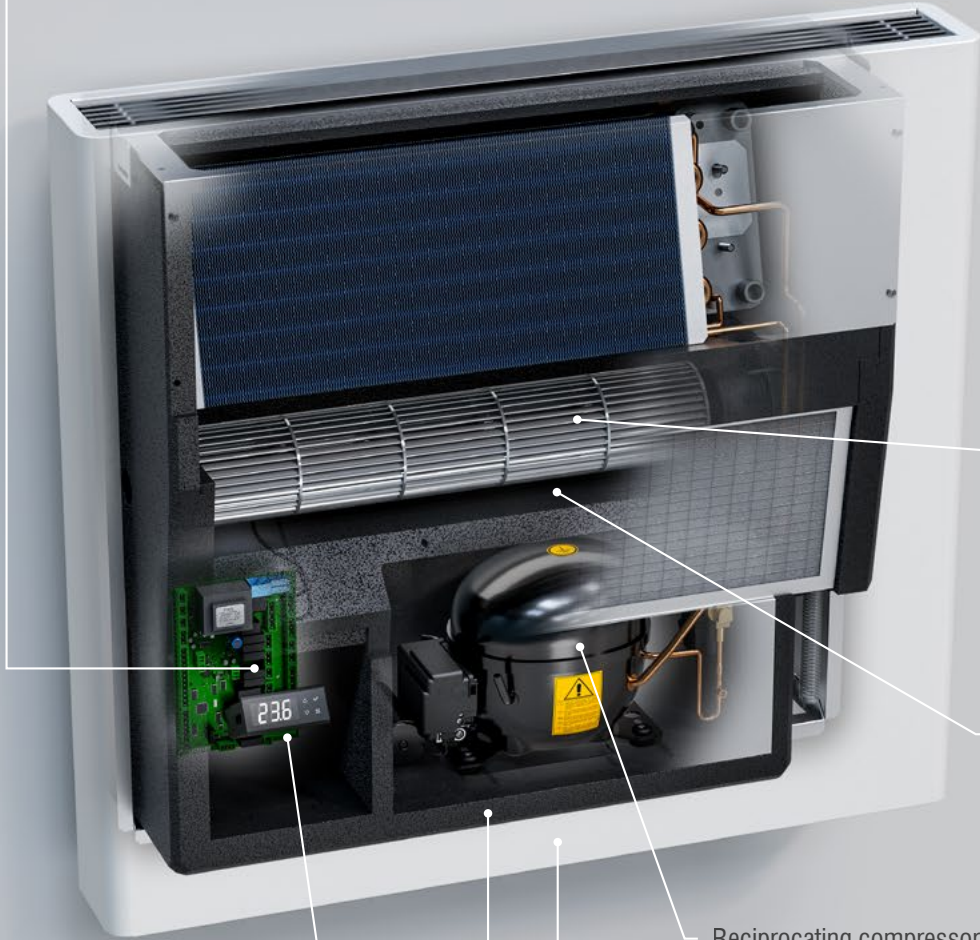
**RV**



Wi-Fi    matter



Touch control with T / RH probes on board and time band management.



3-speed or modulating EC electronic tangential fans to reduce power consumptions and noise.

Main components and condensate drain tray accessible from the front, serviceable and cleanable.

Reciprocating compressor, environmentally friendly gas R513A (GWP 573), R290 (GWP 3) available from 2026.

Modbus RS485 communication as standard



Polypropylene casing to ensure an high level of lightness, thermal and acoustic insulation without compromising strenght.

3 versions available:

- A** : heating, isothermal dehumidification.
- I** : heating, cooling, isothermal dehumidification.
- W** : heating, cooling.



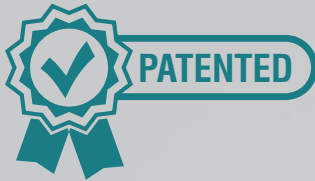
Semi-recessed wall.



Totally recessed wall.

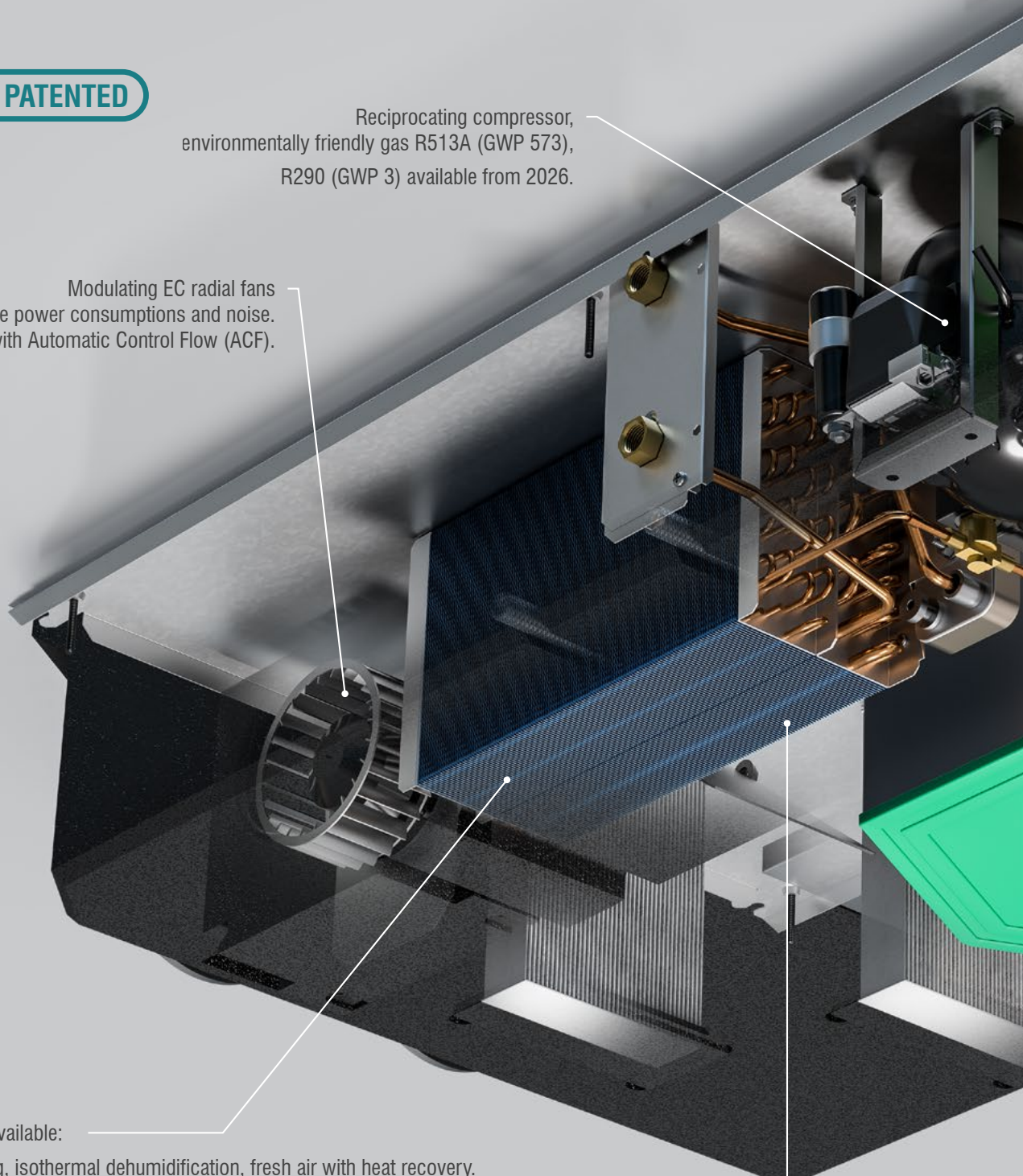
# H0

## Polypropylene horizontal ventilation unit with dehumidification



Reciprocating compressor, environmentally friendly gas R513A (GWP 573), R290 (GWP 3) available from 2026.

Modulating EC radial fans to reduce power consumptions and noise. Available with Automatic Control Flow (ACF).



3 versions available:

- A** : heating, isothermal dehumidification, fresh air with heat recovery.
- I** : heating, cooling, isothermal dehumidification, fresh air with heat recovery.
- W** : heating, cooling, fresh air with heat recovery.

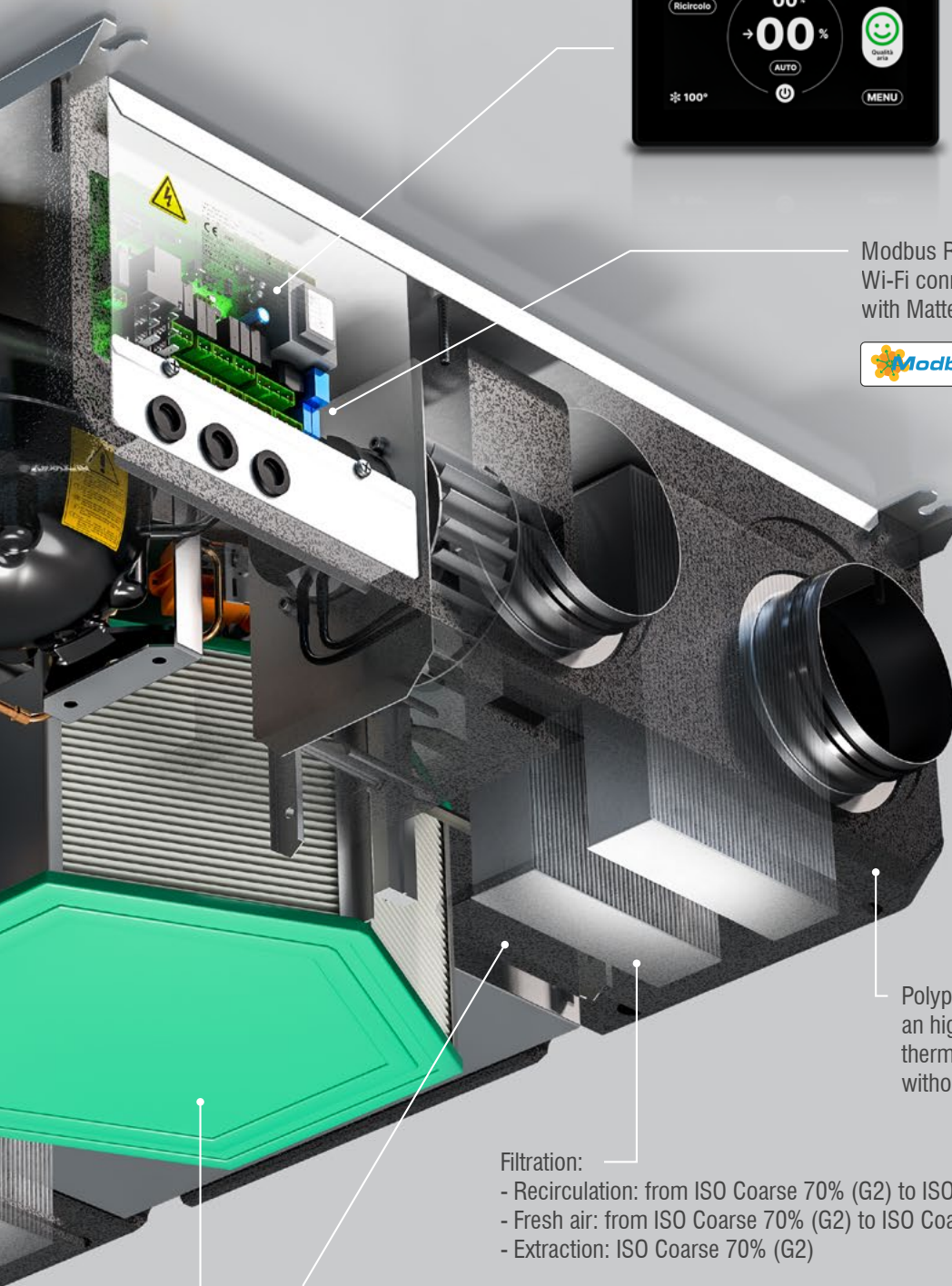
Main components and condensate drain tray accessible from the bottom, serviceable and cleanable.





Touch control with T / RH / IAQ probes on board and time band management

Modbus RS485 communication as standard. Wi-Fi connection compatible with Matter protocol available.



Polypropylene casing to ensure an high level of lightness, thermal and acoustic insulation without compromising strenght.

Filtration:

- Recirculation: from ISO Coarse 70% (G2) to ISO ePM10 80% (F7)
- Fresh air: from ISO Coarse 70% (G2) to ISO Coarse 70% (G2) + ISO ePM10 80% (F7)
- Extraction: ISO Coarse 70% (G2)

Ambience dew point control damper installed internally to reduce footprint and increase system efficiency.

High efficiency cross-flow heat recovery with free-cooling. Also available in enthalpic version

**RER**



Available in metal chassis (airflow rate 520/1000 m<sup>3</sup>/h).

# REV

## Vertical wall - or floor-mounted ventilation unit with dehumidification



Motorized damper to control dew point in the ambient.

Filtration:

- Recirculation: ISO Coarse 70% (G2) or ISO Coarse 90% (G4)
- Fresh air: ISO Coarse 70% (G2) or ISO ePM10 60% (F6)
- Extraction: ISO Coarse 70% (G2).



Touch control with T / RH / IAQ probes on board and time band management

Modbus RS485 communication as standard. Wi-Fi connection compatible with Matter protocol available.



High efficiency cross-flow heat recovery with free-cooling. Also available in enthalpic version

Modulating EC radial fans to reduce power consumptions and noise. Available with Automatic Control Flow (ACF).

Reciprocating compressor, environmentally friendly gas R513A (GWP 573), R290 (GWP 3) available from 2026.

3 versions available:

**A** : heating, isothermal dehumidification, fresh air with heat recovery.

**I** : heating, cooling, isothermal dehumidification, fresh air with heat recovery.

**W** : heating, cooling, fresh air with heat recovery.

# RESIDENTIAL RANGE FOR RADIANT SYSTEM

## Horizontal polypropylene dehumidifiers

Datasheet		RO 20 A	RO 20 I	RO 25 A	RO 25 I	RO 30 A	RO 30 I	RO 35 A	RO 35 I
Dehumidifying capacity	L/Day	16	16	25	25	28	28	32	32
Nominal air flow	m³/h	200	200	260	260	300	300	350	350
Cooling capacity	W	0	1356	0	1818	0	2069	0	2425
Dimensioni W x D x H	mm	710 x 515 x 250							
Weight	kg	24	26	24	26	26	28	26	28

RO



## Horizontal dehumidifiers

Datasheet		RS 050 A	RS 050 I	RS 100 A	RS 100 I
Dehumidifying capacity	L/Day	48	48	100	100
Nominal air flow	m³/h	600	600	1000	1000
Cooling capacity	W	/	3360	/	6800
Dimensioni W x D x H	mm	760 x 650 x 350		1000 x 600 x 450	
Weight	kg	52	55	80	82

RS



## Wall-mounted polypropylene dehumidifiers

Datasheet		RV 20 A	RV 20 I	RV 25 A	RV 25 I	RV 30 A	RV 30 I	RV 35 A	RV 35 I
Dehumidifying capacity	L/Day	16	16	25	25	27	27	30	30
Nominal air flow	m³/h	200	200	260	260	300	300	350	350
Cooling capacity	W	0	1356	0	1818	0	2069	0	2425
Dimensioni W x D x H	mm	730 x 250 x 715							
Weight	kg	24	26	24	26	26	28	26	28

RV



## Polypropylene horizontal ventilation units with dehumidification

Datasheet		HO20A	HO20I	HO20W	HO25A	HO25I	HO25W	HO30A	HO30I	HO30W	HO35A	HO35I	HO35W
Dehumidifying capacity	L/Day	16	16	22	25	25	29	28	28	34	32	32	38
Nominal air flow	m³/h	200	200	200	260	260	260	300	300	300	350	350	350
Fresh air flow	m³/h	0-100	0-100	0-100	0-130	0-130	0-130	0-150	0-150	0-150	0-175	0-175	0-175
Cooling capacity	W	0	1356	1490	0	1818	1880	0	2069	2160	0	2425	2470
Dimensioni W x D x H	mm	1130 x 740 x 250											
Weight	kg	34	36	28	34	36	28	36	38	28	36	38	28

HO



## Horizontal ventilation units with dehumidification

Datasheet		RER 050 A	RER 050 I	RER 050 W	RER 100 A	RER 100 I	RER 100 W
Dehumidifying capacity	L/Day	48	48	58	100	100	120
Nominal air flow	m³/h	520	520	520	1000	1000	1000
Fresh air flow	m³/h	0-250	0-250	0-250	0-500	0-500	0-500
Cooling capacity	W	Isothermal	3230	3650	Isothermal	6800	7700
Dimensioni W x D x H	mm	1665 x 760 x 375			1500 x 1120 x 450		
Weight	kg	80	80	70	140	140	130

RER



## Vertical wall - or floor-mounted ventilation unit with dehumidification

Datasheet		REV 020 A	REV 020 I	REV 020 W	REV 035 A	REV 035 I	REV 035 W	REV 050 A	REV 050 I	REV 050 W	REV 070 A	REV 070 I	REV 070 W
Dehumidifying capacity	L/Day	24,5	24,5	29	36	36	43	48	48	58	68	68	71
Nominal air flow	m³/h	260	260	260	380	380	380	520	520	520	700	700	700
Fresh air flow	m³/h	0 - 130	0 - 130	0 - 130	0 - 190	0 - 190	0 - 190	0 - 260	0 - 260	0 - 260	0 - 350	0 - 350	0 - 350
Cooling capacity	W	Isothermal	1300	1920	Isothermal	2380	2700	Isothermal	3230	3650	Isothermal	4620	4290
Dimensioni W x D x H	mm	600 x 380 x 980			650 x 430 x 1050			700 x 515 x 1600			700 x 515 x 1600		
Weight	kg	60	60	50	65	65	55	90	90	75	92	92	77

REV





**HiDew S.r.l.**

Headquarter : Via dell'Artigianato, 5 35026 Conselve (PD) - Italy  
Phone: +39 049 9502511

Registered Office : Viale Spagna, 31/33 35020 Tribano (PD) - Italy  
Phone: +39 049 9588511 Fax: +39 049 9588522

[www.hidew.it](http://www.hidew.it) [info@hidew.it](mailto:info@hidew.it)



HiDew S.r.l. reserves the right to change the specifications and other information contained herein without notice. No part of this publication may be reproduced without the prior written permission of HiDew S.r.l.

HR-R1EN-2025

MADE IN ITALY

