

# RT360

## ALUMINIUM DRUM SLOT DIFFUSER WITHOUT FLANGE AND DIRECT MOUNTING



### TECHNICAL INFORMATION

APPLICATION	Airflow direction	Lateral, left/right adjustable
	Airflow type	Lineair, exhaust or supply
CONSTRUCTION	Shape	Lineair
	Min. Length	300mm
	Max. length	2000mm
	Available steps in length	1mm
	Number of slots	1,2
	Slot width	14mm
	Installation depth	39mm
MATERIAL	Standard material	Extruded aluminium
	Standard finishing	Satin anodized 11µm
	Product finishing options	Powder coating RAL
	Drums	PP
MOUNTING	Mounting option	Fixed mounting on the plenum box RP300
PLENUM	Material	Galvanised (275g/m <sup>2</sup> ) steel sheet, PP/TPE spigot
	Optional insulation	Melamine 6mm
	Spigot	Class D spigot with double lip seal
	Volume control	Optional perforated volume flow control disk inside the spigot
	Mounting options	Mounting eyes (Ø7mm) standard, mounting brackets available upon request

### VARIANTS

RT360, RT360S, RT360A

The drum slot diffuser is suitable for the supply and exhaust of cooled and heated air, designed for installation in slot ceilings. The slot is fitted with air direction elements which can be individually adjusted. These specially developed air direction elements (drums) ensure an ideal and stable air diffusion pattern as well as a low noise level. There is a high level of induction and air stream penetration in the room. All lengths are available.

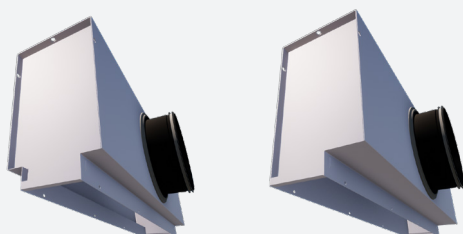
Slot diffuser with adjustable polypropylene air direction elements (Drum length=150mm, Slot width=14mm)

Fixed plenum mounting

Frameless version is ideally for installation in slot ceiling

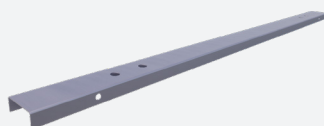
Wide temperature range for both heating and cooling

### ACCESSORIES



RP300S

RP300A



BOBRT

### QUICK SELECTION

Supply Q <sub>v</sub> [m³/h]		L [mm]			
	L <sub>w</sub>	600	1000	1500	2000
RT361	25 dB(A)	55	85	118	149
	35 dB(A)	79	121	169	213
RT362	25 dB(A)	93	143	198	250
	35 dB(A)	133	204	283	357

### EFFECTIVE AIR DISCHARGE AREA

Supply A <sub>k</sub> [m²/m]	RT361	RT362
	0.0111	0.0179

## PRODUCT KEY

## DRUM SLOT DIFFUSER WITHOUT FLANGE RT360

R	T	3	6	2	-	-	1	2	0	0
---	---	---	---	---	---	---	---	---	---	---

Slot length L (mm):  
From 300 to 2000mm,  
per 1mm

-: Naturel anodised  
F: Coated

-: Standard  
C: Corner section 90° (300 x 300 mm)  
E: End piece  
M: Intermediate piece

1: 1 slot  
2: 2 slots

36: Diffuser without flange - for fixed mounting on the plenum box

37: Diffuser without flange, with mounting plates for fixation in strip suspended ceiling - for fixed mounting on the plenum box

T: Supply - black air direction elements RAL9005  
W: Supply - white air direction elements RAL9010  
A: Exhaust - without air direction elements

## PLENUM RP300 FOR DIRECT MOUNTING

R	P	3	0	2	-	S	-	-	0	0	1	6	0	1	2	0	0
---	---	---	---	---	---	---	---	---	---	---	---	---	---	---	---	---	---

Nominal diameter (mm):  
80, 100, 125, 160, 200  
Slot length ≤1600:  
1 diameter  
Slot length ≥1601:  
2 diameters

Slot length L (mm):  
From 300 to 2000mm,  
per 1mm

0: Without mounting straps  
1: With mounting straps

-: Without damper  
D: With damper

-: Non insulated plenum  
G: Insulated plenum  
H: Half insulated plenum

S: Side connection  
A: Asymmetric

-: Standard  
L: End piece left (looking at plenum front into the inlet of the connection collar)  
M: Intermediate piece  
R: End piece right (looking at plenum front into the inlet of the connection collar)

1: 1 slot  
2: 2 slots

30: Plenum for fixed mounting on diffuser

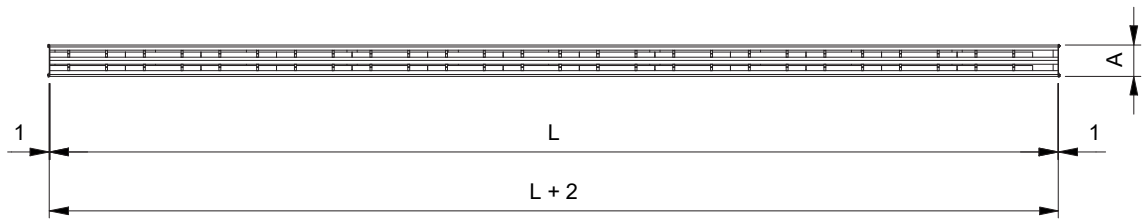
## PRODUCT KEY

## DRUM SLOT DIFFUSER RT360 WITH PLENUM RP300 (DIRECT MOUNTING)

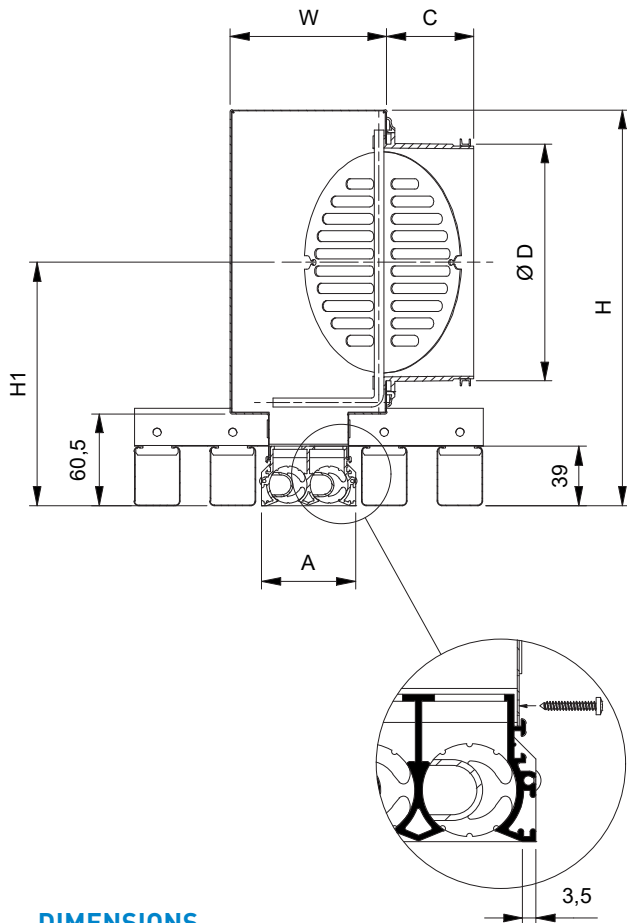
R	T	3	6	2	-	-	S	-	-	0	1	2	0	0
<p>Slot length L (mm): From 300 to 2000mm, per 1mm</p> <p>0: Without mounting straps 1: With mounting straps</p> <p>-: Without damper D: With damper</p> <p>-: Non insulated plenum G: Insulated plenum H: Half insulated plenum</p> <p>S: Side connection A: Asymmetric</p> <p>-: Naturel anodised F: Coated</p> <p>-: Standard L: End piece left (looking at plenum front into the inlet of the connection collar) M: Intermediate piece R: End piece right (looking at plenum front into the inlet of the connection collar)</p> <p>1: 1 slot 2: 2 slots</p> <p>36: Diffuser without flange - fix mounted on the plenum box 37: Diffuser without flange, with mounting plates for fixation in strip suspended ceiling - fix mounted on the plenum box. Min. slot length &gt;=370mm.</p> <p>T: Supply - black air direction elements RAL9005 W: Supply - white air direction elements RAL9010 A: Exhaust - without air direction elements</p>														

## DUMMY PLATE BOBRT FOR DRUM SLOT DIFFUSER RT360 (DIRECT MOUNTING)

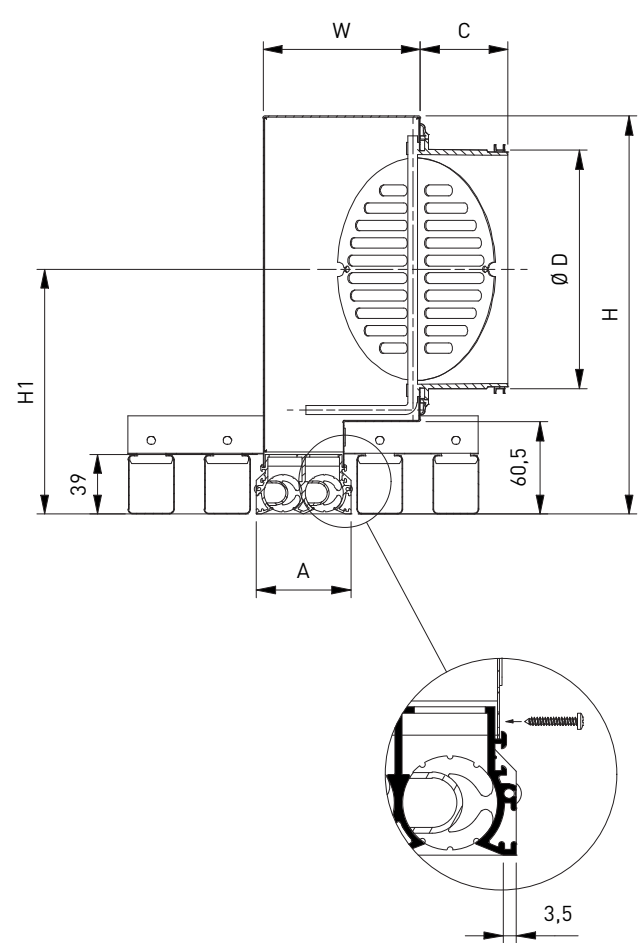
B	0	B	R	T	0	2	1	2	0	0
<p>Length dummy plate (mm): From 20 to 2000mm, per 1mm</p> <p>1: 1 slot 2: 2 slots</p>										



## RT36 + RP30\_S



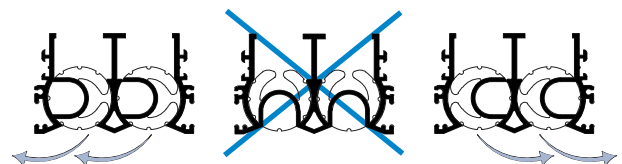
## RT36 + RP30\_A



## DIMENSIONS

	Number of slots - RT36 + RP30_S/A	
	1	2
<b>A</b>	35	62
<b>C</b>	58	58
<b>ØD</b>	123	158
<b>H</b>	225	260
<b>H1</b>	173	190
<b>W</b>	75	102

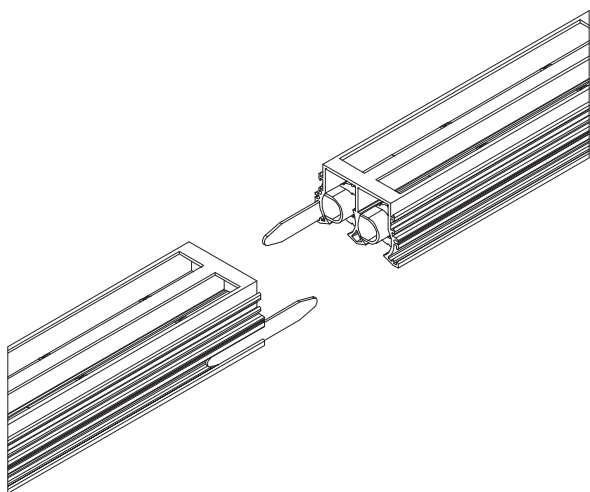
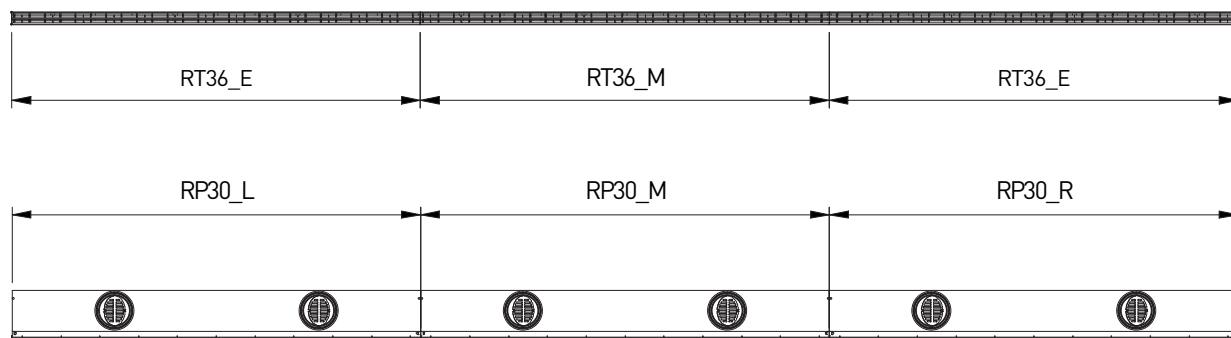
## AIRFLOW DIRECTION



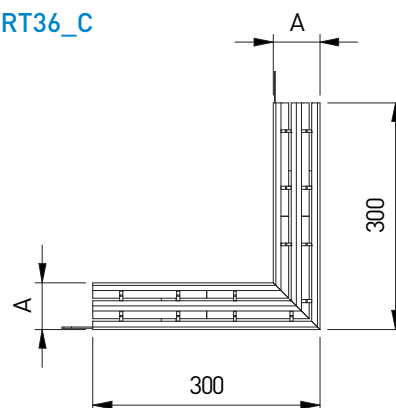
All dimensions in mm

$L \leq 1600$ : 1 diameter  
 $L \geq 1601$ : 2 diameters

## LINEAR: END PIECES AND INTERMEDIATE PIECES



RT36\_C



RT361-F/1500  
 + RP301LS-D1/125/1000  
 + BOBRT01/500

