

# CASA Climate Quick Guide



## Controlling the indoor climate

A room controller (LUNA) is mounted on the wall. This can be used to control the indoor climate, by setting the set point for the indoor temperature. The temperature can be changed by turning the knob in the lower right. The indicator lamp in the upper right corner can light up in different colours. Red indicates a heating load, blue indicates a cooling load and flashing blue means condensation and that the cooling valve is closed (i.e. no cooling emerges). If it flashes blue, do the following:

- 1) Check that windows/doors are closed. This is to avoid bringing in moist air from the outside on a large scale.
- 2) Make sure you turn on the stove fan when cooking and close the bathroom door
- 3) If the indicator light has been flashing blue for a long time, contact the landlord. (The lamp stops flashing blue when the condensation sensor has dried)

### To keep in mind

- The ventilation unit's operating mode – home, away and boost mode – affects the heating and cooling capacity. For normal capacity, use operating mode home.
- Do not open windows in the summer when it is warmer outdoors than indoors. Also remember to shut out solar incident radiation as much as possible, for example with curtains.
- Do not open windows in damp weather conditions. If damp air enters the apartment, the cooling valve may need to throttle the cooling from CASA Climate CCF in order to avoid condensation on the product.
- Take care when cleaning the coil, to avoid the risk of it being damaged.
- At high humidity, the cooling effect is decreased to avoid condensation.



## Cleaning and maintenance

The room controller and thermostat RTN81 (if present) must be cleaned with a dry cloth. Never use water, detergent, cleaning solvent or a vacuum cleaner.

The grille on CCF can be cleaned with a vacuum cleaner nozzle that does not cause scratches. Alternatively, use a cloth with a mild soap or alcohol solution. Avoid aggressive agents that may harm painted surfaces.

CASA Climate CCF needs to be inspected once or twice a year, and if necessary cleaned of dust. This is best done at the same time as changing the filters in the air handling unit. When inspecting, check for any obvious dust on the product's coil (indicated in blue).

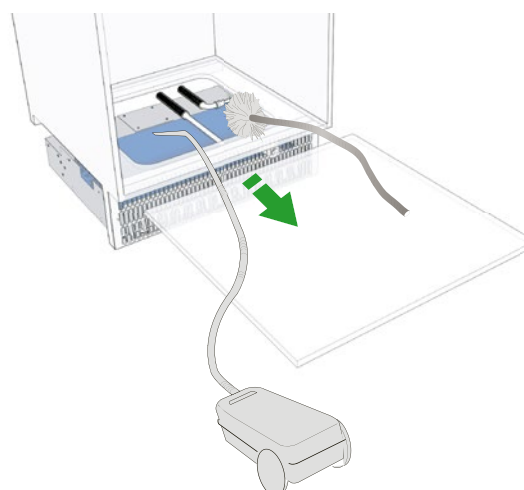
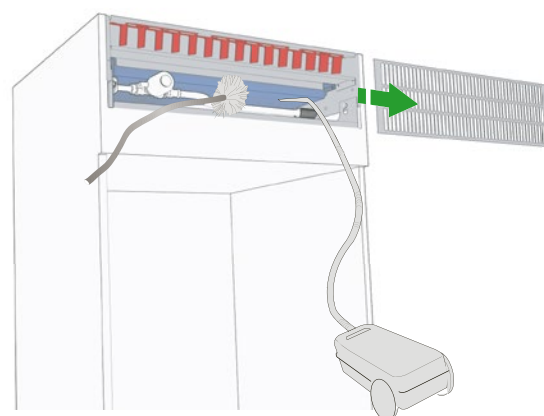
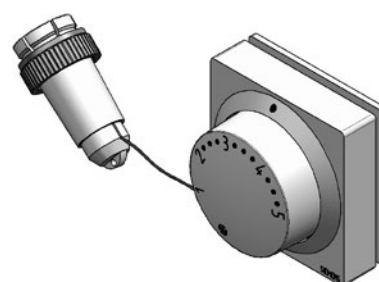
In cases where the CCF is mounted near the ceiling, inspection must be performed through the product's grille using a torch. For cleaning, the grille must be unscrewed. The coil (indicated in blue) can then be dusted using a feather duster, which is then cleaned with a vacuum cleaner (see image). Alternatively, vacuum clean the coil directly.

In the case of floor mounting in a cabinet with a double bottom, remove the upper panel for inspection and possible cleaning of the coil (indicated in blue) with a vacuum cleaner. A feather duster can be used to clean the area around the water pipes, for better access.

Room controller LUNA



Thermostat, RTN81



Feel good **inside**

